

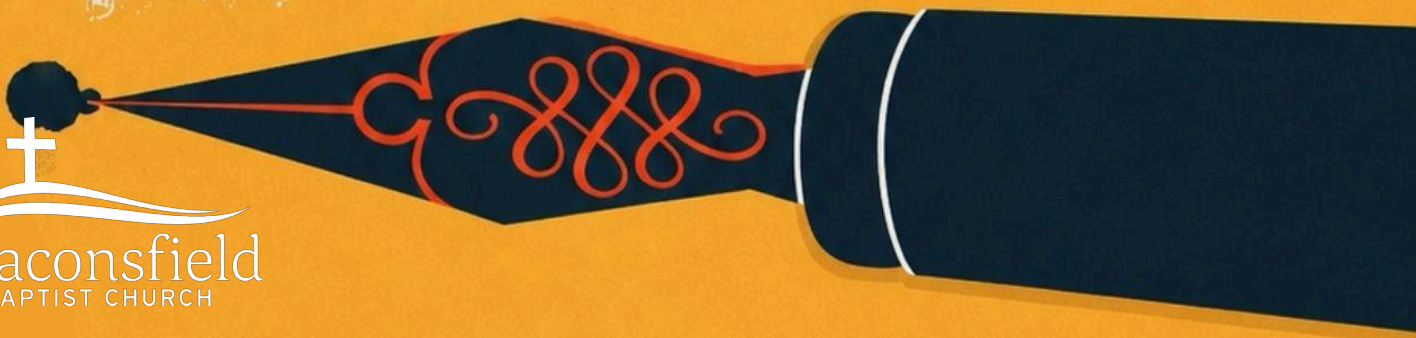
**MAY 2026**

**SERMON SERIES**

**THE BEACON**

# THE SCREWTAPE LETTERS

---



# SERVICES

MAY 2026

- 03 | 10am** **WHAT'S IN A DREAM? - PART 2**  
Genesis 40:16-23 | [Duncan Becsi](#)
- 6pm** **THE SCREWTAPE LETTERS: LETTER 1**  
Matthew 13:1-9 | [Duncan Becsi](#)
- 10 | 10am** **WHAT'S IN A DREAM? - PART 3**  
Genesis 41:1-14 | [Duncan Becsi](#)
- 6pm** **THE SCREWTAPE LETTERS: LETTER 2**  
Hebrews 10:24-25 | [Duncan Becsi](#)
- 17 | 10am** **FROM DUNGEON TO PALACE**  
Genesis 41:15-40 | [Duncan Becsi](#)
- 6pm** **THE SCREWTAPE LETTERS: LETTER 3**  
Colossians 3:12-14 | [Duncan Becsi](#)
- 24 | 10am** **EGYPT, EGYPT, EGYPT...**  
Genesis 41:41-57 | [Charles Lazaro](#)
- 6pm** **THE SCREWTAPE LETTERS: LETTER 4**  
Matthew 6:5-13 | [Duncan Becsi](#)
- 31 | 10am** **HOW THE TABLES HAVE TURNED**  
Genesis 42:1-17 | [Duncan Becsi](#)
- 6pm** **THE SCREWTAPE LETTERS: LETTER 5**  
James 4:13-15 | [Duncan Becsi](#)

## NEW TO CHURCH?

We here at Beaconsfield Baptist are a group of ordinary people. We come from all sorts of different backgrounds. But what we have in common is a love of Jesus.

Week by week we meet to enjoy worship together and to be part of a church family that is warm, caring and accepting. We would love to have you join us.

Email the office at [info@beaconsfieldbaptist.com.au](mailto:info@beaconsfieldbaptist.com.au) to get connected!

## MAKE BEACY HOME

We run a number of ministries designed to help people from all walks of life grow in faith and connect with one another.

If you're interested in making Beacy your home, and serving in the life of our church, there are a number of ways in which to do so.

Please get in touch with a member of our Leadership Team to discuss opportunities to serve and get more involved.



**Duncan Becsi**  
Senior Pastor

One of my earliest introductions to C.S. Lewis was his seminal work, 'The Screwtape Letters.' His book introduces readers, in a way that few other works do, to the Biblical reality of spiritual warfare. It's easy to forget that the struggles we face, not just as Christians, but as human beings made in God's image, are exacerbated by the efforts of the devil. He is always working to bring us down. He

wants nothing more than to distort God's image in the very ones who bear it. Why? Almost certainly because he hates the One whose image we bear. And so what does our adversary do? He tempts us to think and say and do what we ought not think and say and do. Temptation is his weapon of choice. It's how he attacked the Lord Jesus. And his strategy hasn't changed. Please do join me as we consider together on a Sunday night, The Screwtape Letters.

## SERVICE TIMES

### Morning Worship | 10am

Each Sunday we gather together to worship authentically, grow intentionally, pray expectantly and love sacrificially.

Join us online at 10am

### Night Church | 6pm

Night Church at BBC has cultivated a vibrant community of youth, young adults, young families and the young-at-heart.



## GIVING

We give as an act of worship, entrusting God with our money and partnering in ministry and mission.

Please consider these secure online options for your regular giving.

**Give online with Tithely**

### Direct Bank Transfer

Beaconsfield Baptist Church  
BSB: 704 922  
ACC: 100 007 477

# MISSIONS CONCERT

The Missions Concert is on Saturday 23rd at 7pm.

Come along and see some amazing talent.

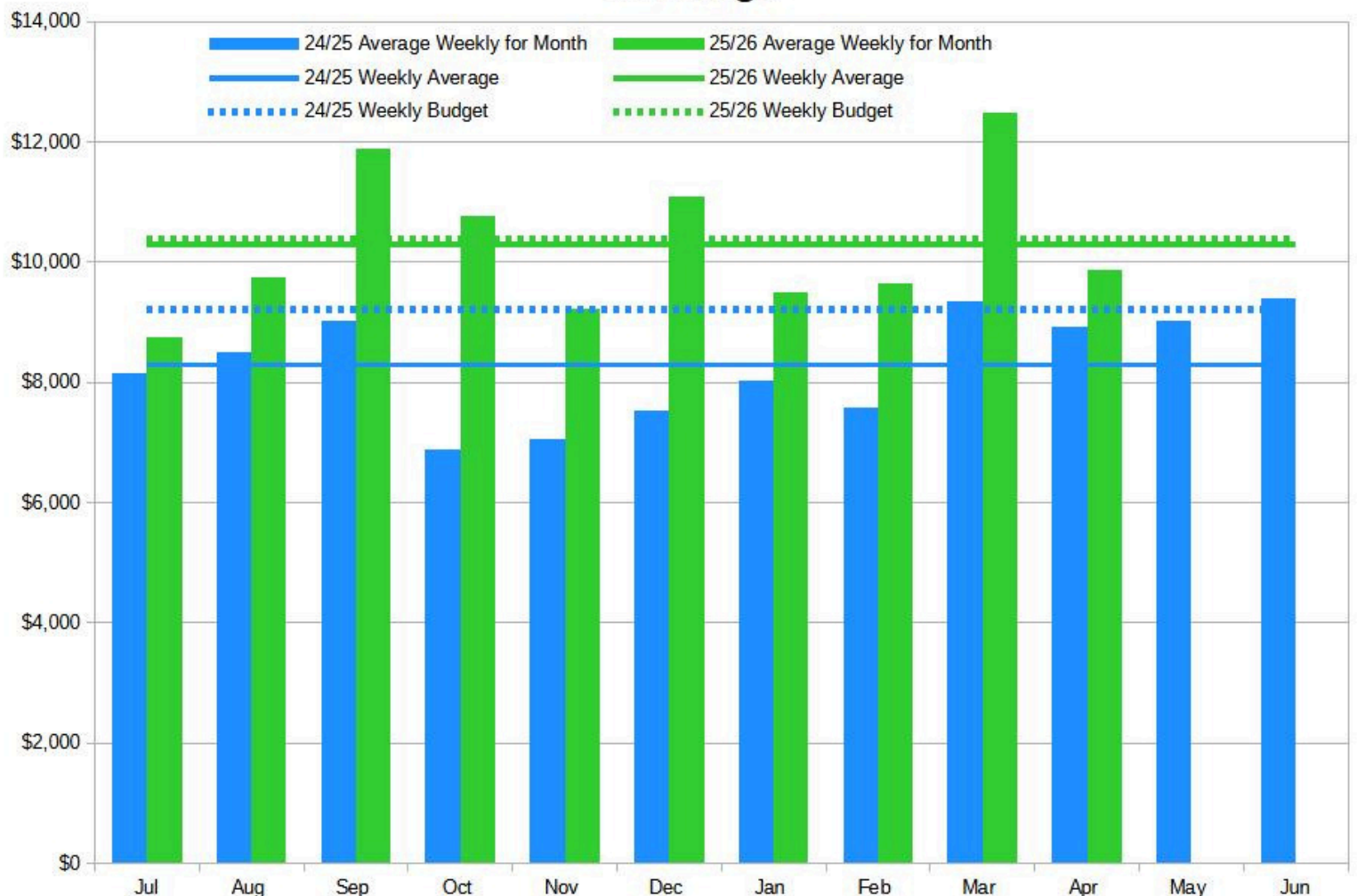
**Please make a donation to support our missions partners.**

WHERE TWO OR MORE  
ARE GATHERED

THIRD MONDAY  
EACH MONTH AT 1:30 PM

prayer  
meeting.

## Offerings





SUNDAYS AT 10AM  
DURING SCHOOL TERM  
FOR BUBS TO CHILDREN IN KINDER

crèche.

## **OPEN HOUSE PRAYER**

Open House Prayer is on  
Thursday 7th at 7pm, at Glen  
and Megan's place

## **MENTAL HEALTH SUPPORT GROUP**

The Mental Health Support  
Group meets on Wednesday  
13th from 7 to 8.30pm at the  
church.

**See Nicholas Olasau for  
more.**

## HELPERS NEEDED

Helpers are needed for looking after a few children during the Tuesday morning women's Bible study at church, twice per term (one hour). Speak to Zoe Russell.

## CHURCH PRAYER MEETING

The Church Prayer Meeting is on Monday 18th from 1.30 to 2.30pm at the church.

**Join the group as they pray for our church and the world around us.**

See Lin Rauber for more details

## WOMEN'S MORNING TEA

The Women's Morning Tea is on Saturday 16th from 9.30 to 11.30am.

**Join them for a time of fellowship and encouragement.**

Sign up at the life desk

## SOCIAL LIGHTS

Social Lights will be at Pink Hill Hotel on Thursday 14th at 12 noon.

**Join them to enjoy a meal and fellowship together.**

Contact Lin Rauber for more information.

## MAKE AND MINGLE

Make and Mingle is on Wednesdays from 10am to 12 noon.

It's craft, morning tea and fellowship.

See Ann Taylor for more details.

## PLAYGROUP

Playgroup is on Wednesdays from 10am to 12 noon.

It has indoor and outdoor activities, craft, story time—a fun environment for pre-school children and their carers.

**See Cheree or Eileen for more details.**

## JAG

**JAG** is on Friday 29th from 7 to 9pm at the church.

JAG is for grades 3 to 6. Be there for a creative night of construction.

**For more information see Zoe at [zoe@beaconsfieldbaptist.com.au](mailto:zoe@beaconsfieldbaptist.com.au).**

## YOUTH

The Youth are not meeting on Friday 22nd.

Otherwise they meet on Friday's from 7 to 9pm at the church.

**See Leo for more details.**

# MINISTRIES

For more information about our ministries, visit [beaconsfieldbaptist.com.au/connect](http://beaconsfieldbaptist.com.au/connect)

## LIFE GROUPS

Our Life Groups meet weekly or fortnightly in Beaconsfield and surrounding areas. We want everyone who calls Beacy home to be in a group.  
Contact: Charles Lazaro

## MENS MINISTRY

Weekly mens breakfast and monthly fellowship.  
Contact: Allan Sariman

## SOCIAL-LIGHTS

Second Thursday of each month. Designed for retirees, all welcome!  
Contact: Lin Rauber

## WOMEN'S MINISTRY

Quarterly fellowship held on Saturdays in Feb, May, Aug, Nov, 9.30am.  
Contact: Lorraine Mills

## MAKE & MINGLE

Wednesdays, 10am - 12pm.  
For friendship and craft!  
Contact: Ann Taylor

## NEXTGEN & CRÈCHE

During all Sunday morning services throughout the school term. For toddlers and children from kinder to grade 6.  
Contact: Zoe Russell

## LITTLE BEACIES'

Wednesdays, 10am to 12pm.  
For pre-school aged children.  
Contact: Cheree Stevens

## JUNIOR ACTIVITY GROUP

For students in grades 3 to 6.  
Third Friday of the month, 7-9pm.  
Contact: Zoe Russell

## PRAYER SUPPORT GROUP

We believe in the power of prayer and would love to pray for you! Requests can be made confidentially on our website.  
Contact: Duncan Becsi

## HOSPITAL PACKS

Gift and activity packs for children in hospital doing it tough.  
Wednesdays, 9.30am (as needed).  
Contact: Cheryl Reid

## BEACY YOUTH

For students in grades 7 to 12.  
Contact: Leo Rodriguez

## YOUNG ADULTS

For youngens aged 18 to 30(ish). 6pm Sunday Nights as well as numerous Life Groups throughout the week.  
Contact: Leo Rodriguez

## GET IN TOUCH

[leadership@beaconsfieldbaptist.com.au](mailto:leadership@beaconsfieldbaptist.com.au)



**Leo Rodriguez**  
Youth & YA Pastor



**Charles Lazaro**  
Associate Pastor



**Duncan Becsi**  
Senior Pastor



**Glen Slimmon**  
Elder



**Tim Westendorp**  
Elder



**Lin Rauber**  
Elder



[@BeaconsfieldBaptist](#) [@beacyya](#)  
[@beacynightchurch](#) [@beacyyouth](#)

[beaconsfieldbaptist.com.au](http://beaconsfieldbaptist.com.au)

[info@beaconsfieldbaptist.com.au](mailto:info@beaconsfieldbaptist.com.au)

(03) 9707 0777



[@beacynightchurch](#)  
[@beacyya](#) [@beacyyouth](#)